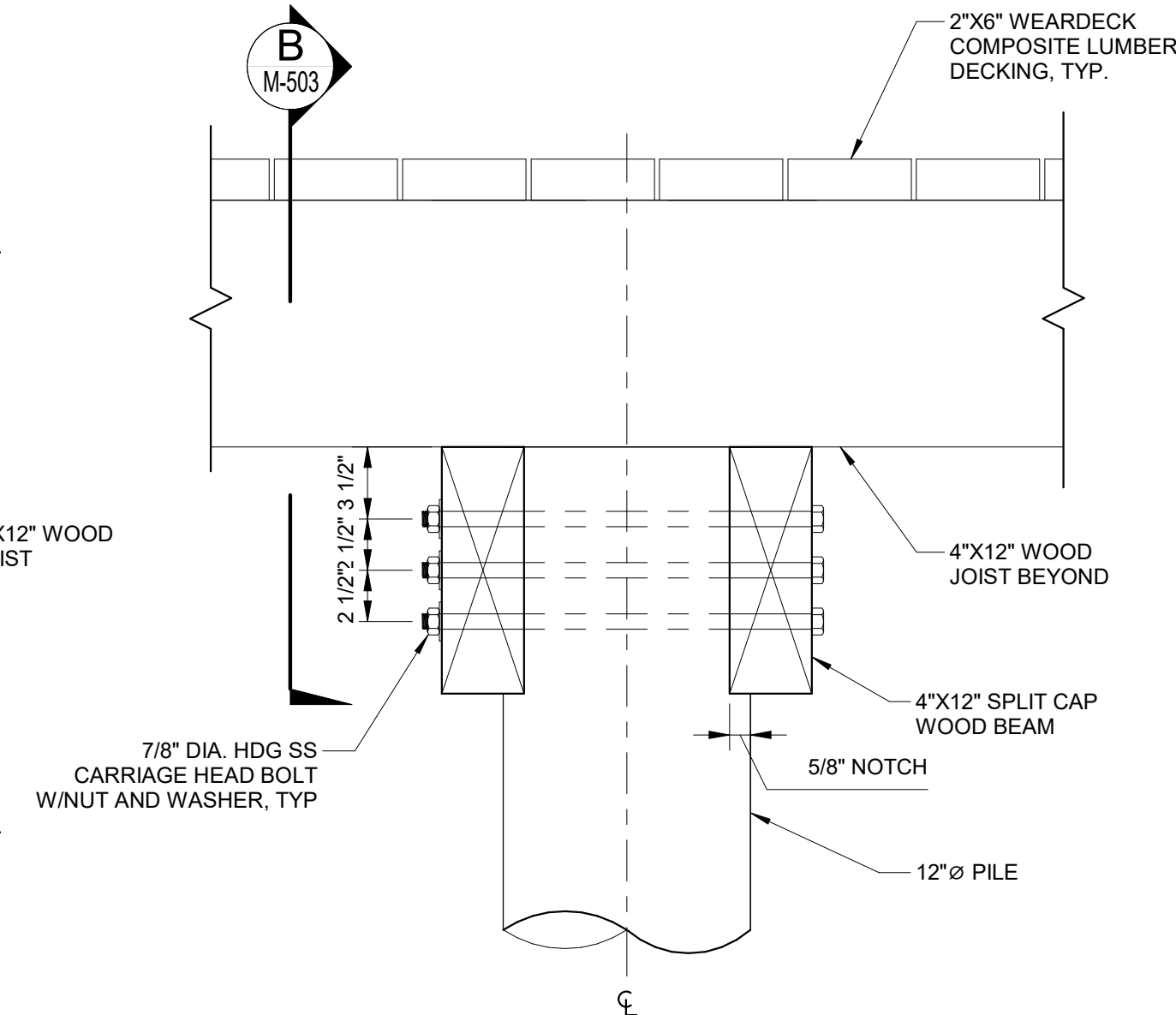
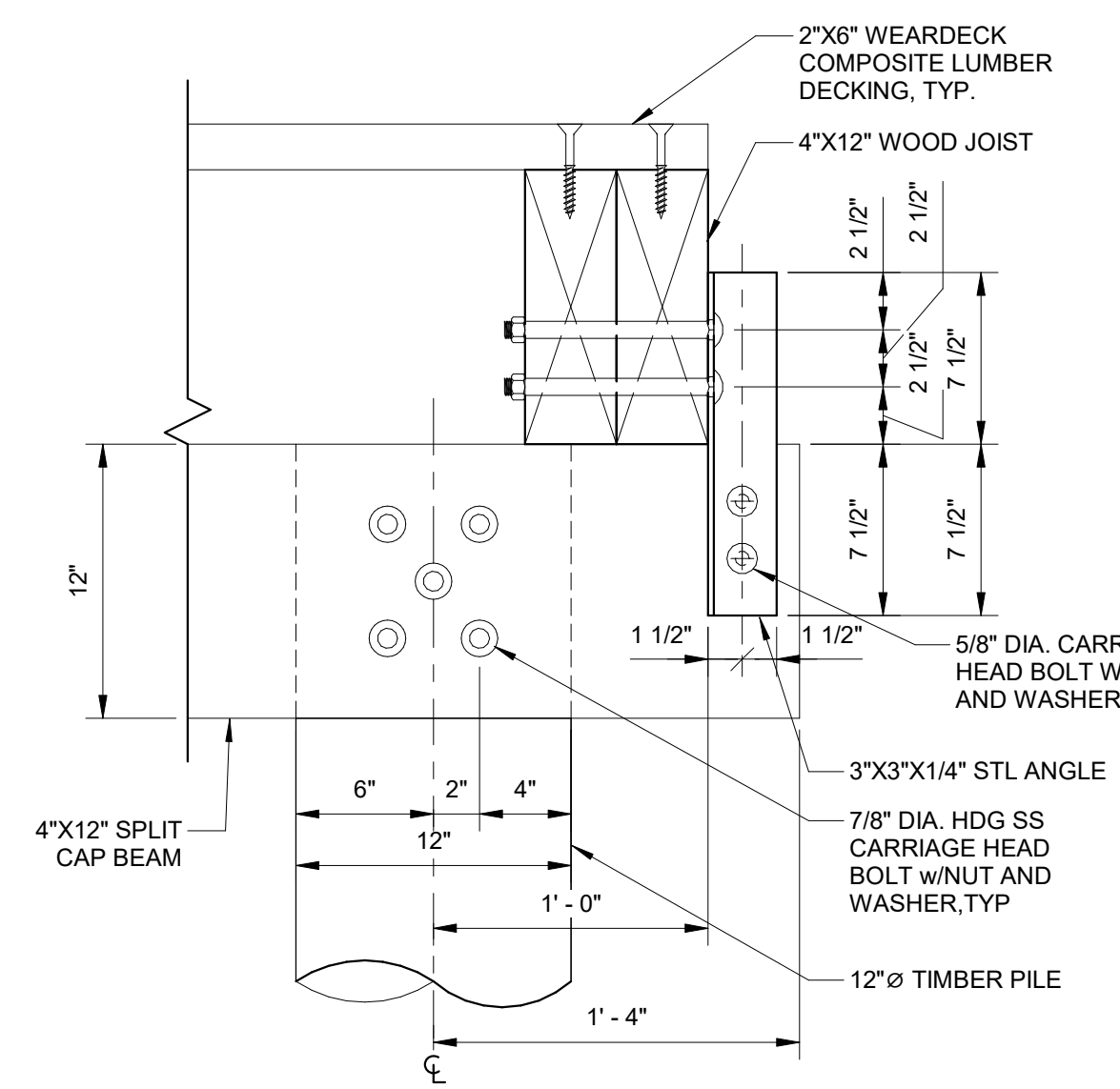


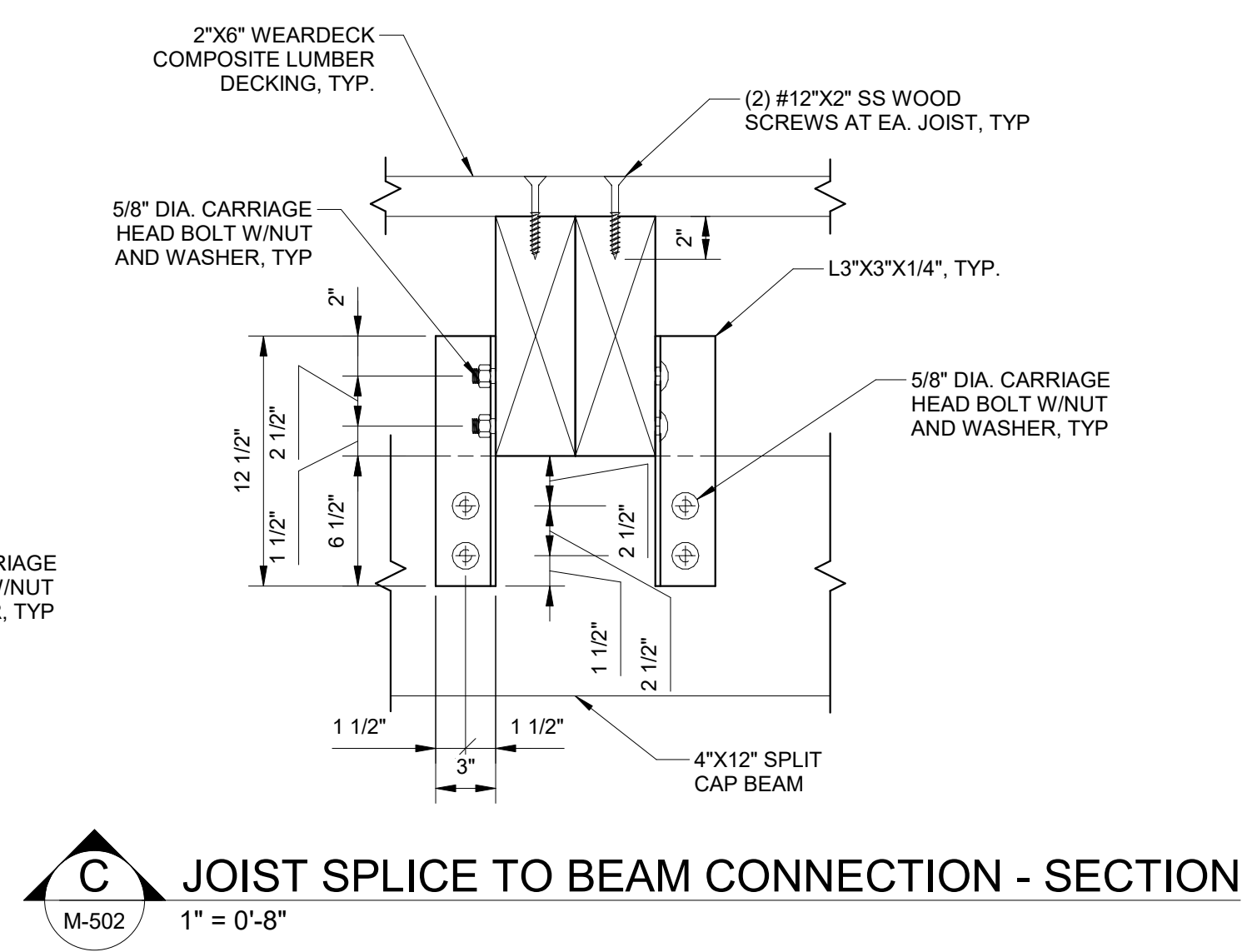
1 TYPICAL - DETAIL
M-503 1" = 0'-4"



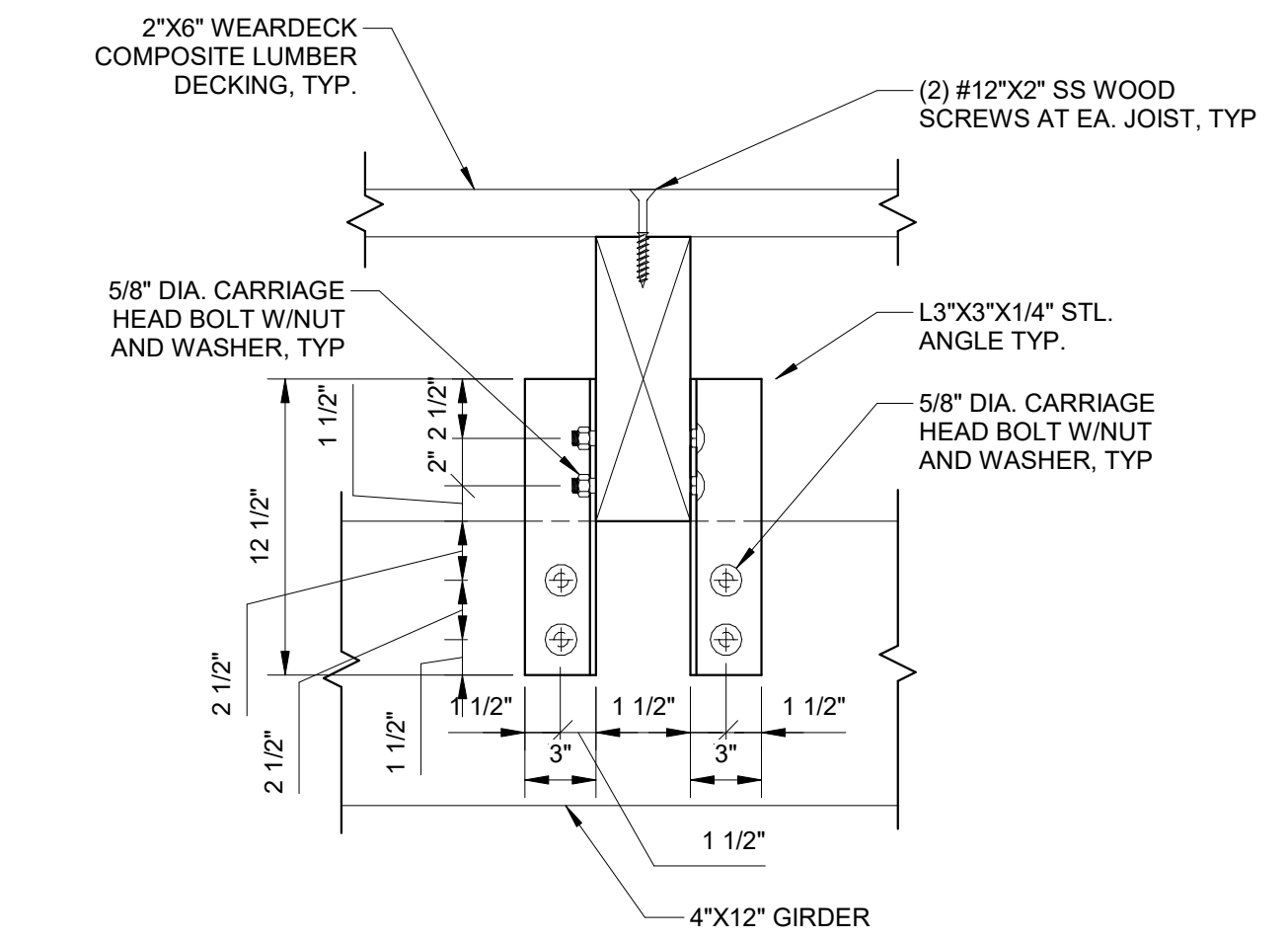
A GIRDER CONNECTION - SECTION
M-502 1" = 0'-8"



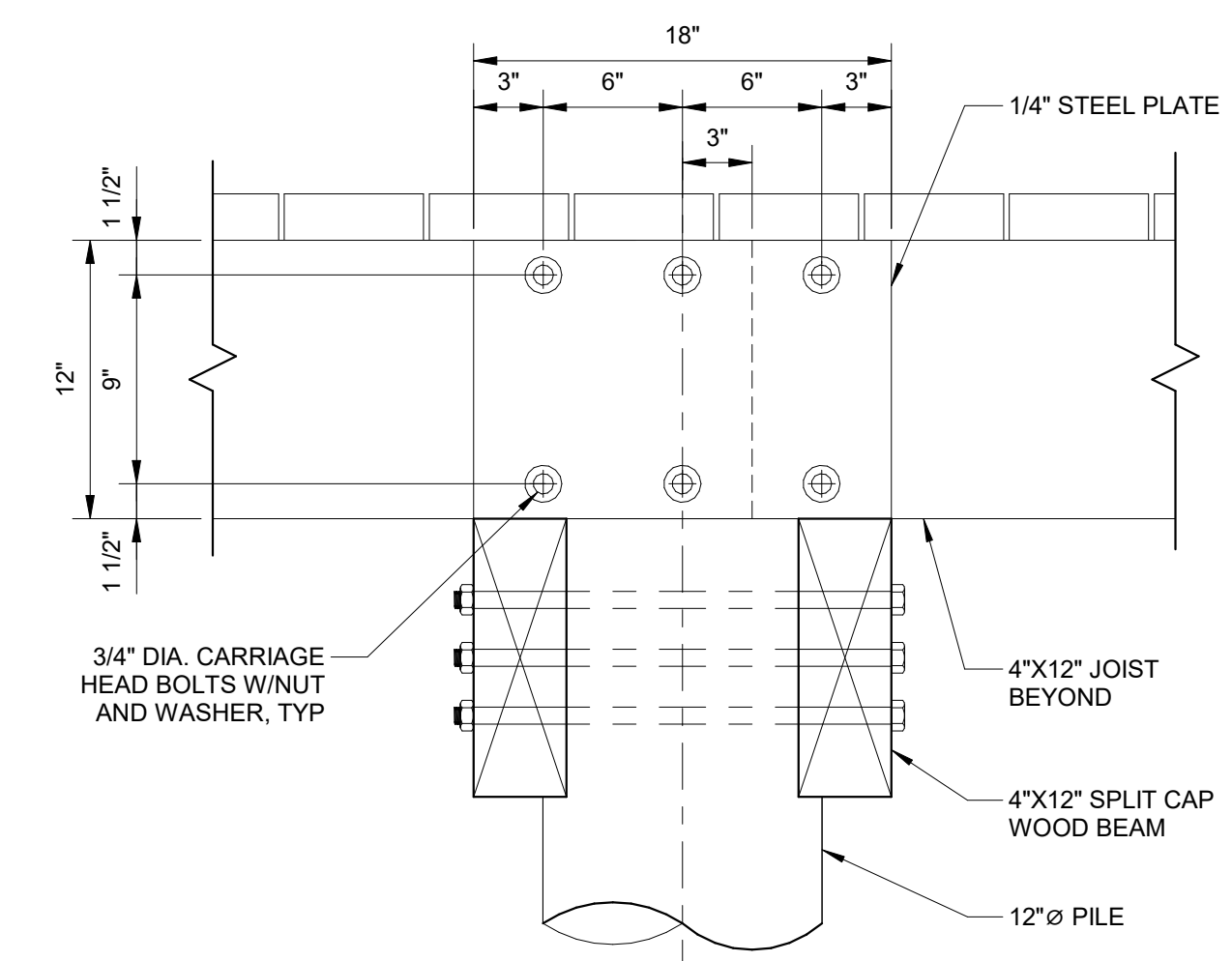
B GIRDER CONNECTION SIDE - VIEW
M-502 1" = 0'-8"



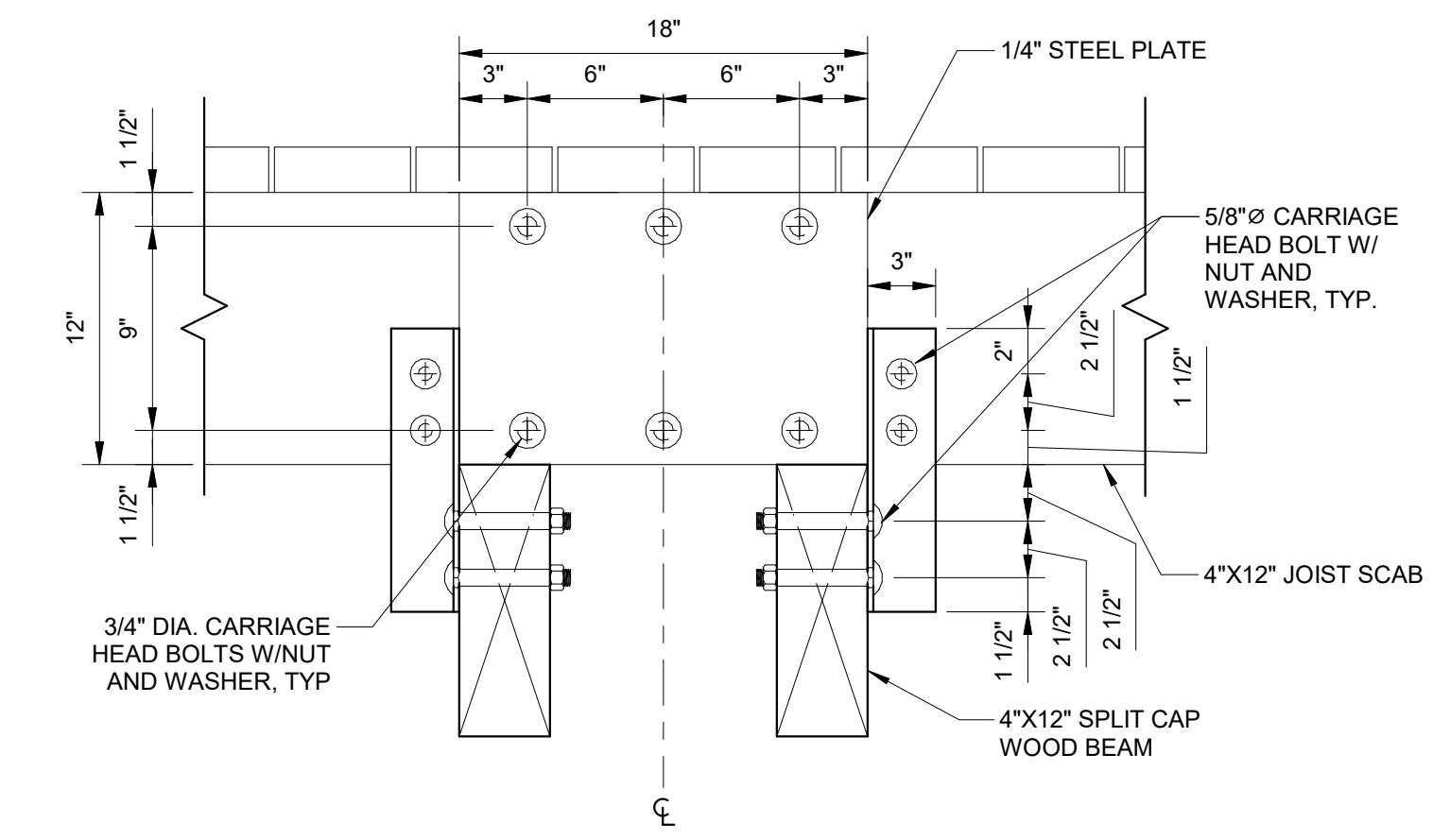
C JOIST SPLICE TO BEAM CONNECTION - SECTION
M-502 1" = 0'-8"



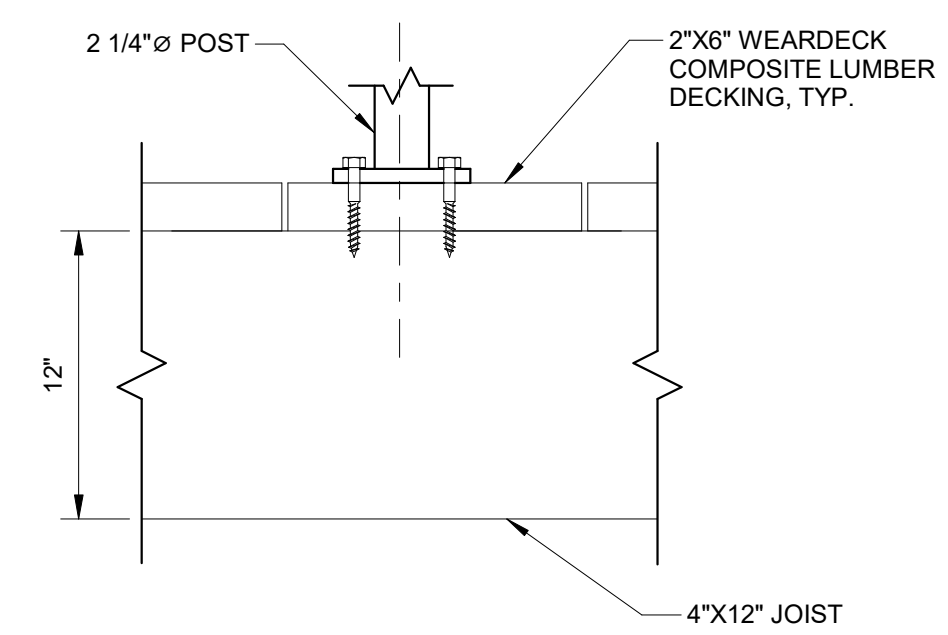
D JOIST TO BEAM CONNECTION - SECTION
1" = 0'-8"



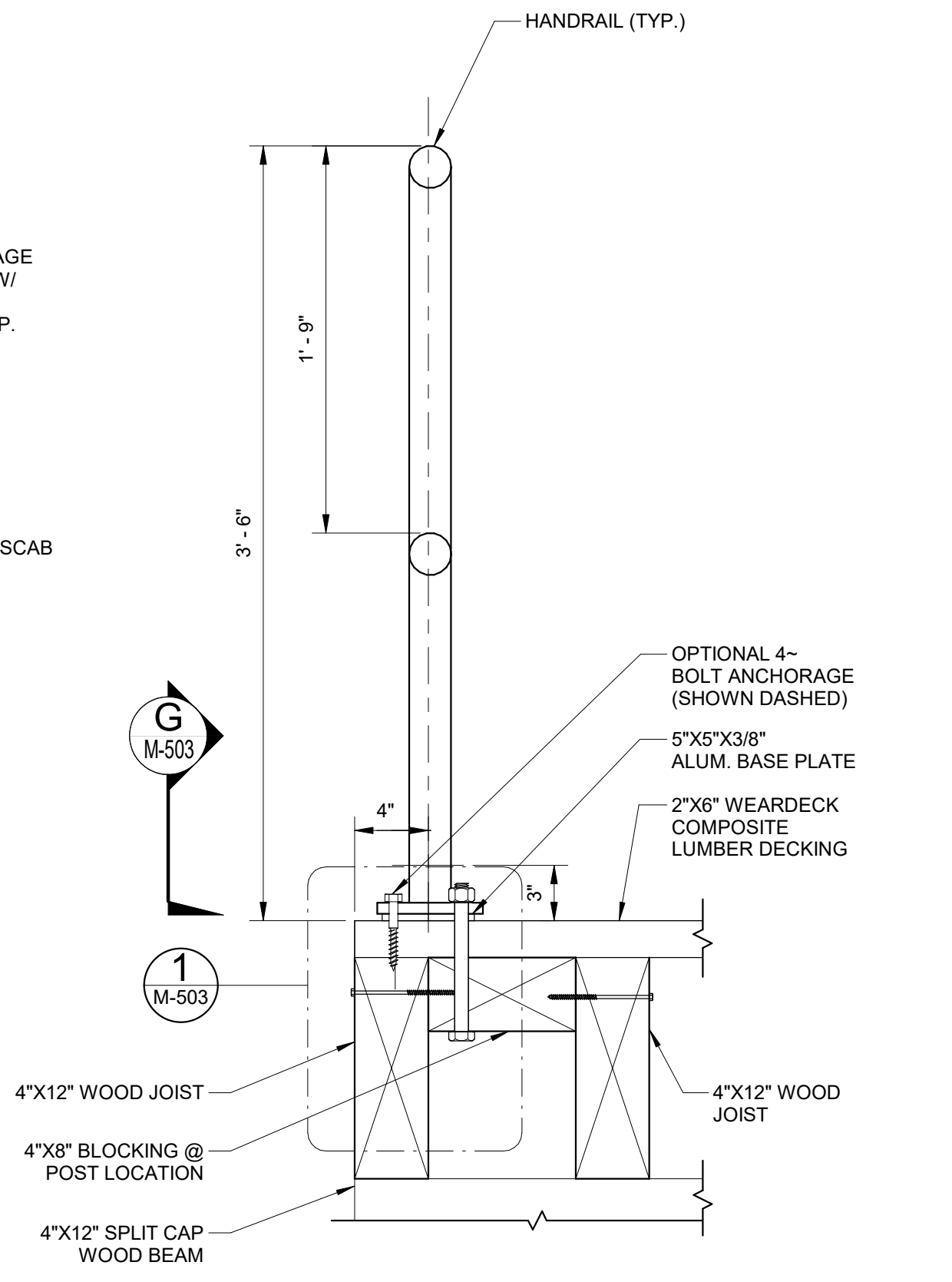
E SCAB SPLICE - SECTION
M-502 1" = 0'-8"



F LAP SPLICE - SECTION
M-502 1" = 0'-8"



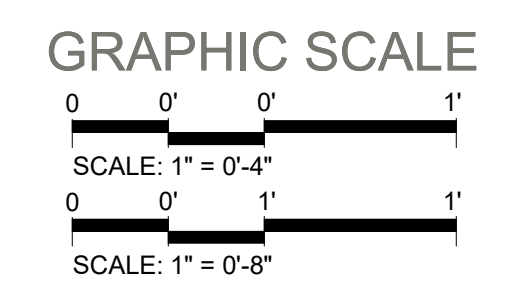
G GUARD RAILING POST CONNECTION - SECTION
M-503 1" = 0'-8"



I TYPICAL RAILING - SECTION
M-502 1" = 0'-8"

ANSI D (34"x22")

MOTT MACDONALD
930 Main Campus Drive,
Suite 200
Raleigh, NC 27606
License No. F-0669
T +1 (919) 552 2253
F +1 (919) 552 2254
www.mottmacamericas.com



PROJECT ENGINEER		Designed By	JAVIER QUIROS	County	HYDE COUNTY
		Entered By	VICTOR PADILLA	Division	FERRY DIVISION
		Project Engineer	KRISTOPHER PAGAN	Plan Date	1-14-26
		Project Manager	ALLISON THORBURN		
Rev.	Date	Drawn	Description	Ch'kd	App'd

NCDOT PASSENGER FERRY DOCK REPLACEMENT - OCRACOKE ISLAND

M-503 MISCELLANEOUS DETAILS (3 OF 5)